

# DG-Guard Client EPP 5.1

## Introduction

Download the 'CLIENT' (Remote) software for your evaluation.

Install this software into your computer then call our server and you will see the capabilities of the DigiGuard.



Digital Security Video Communication Map

## Requirements

A PC with a modem which is connected to a telephone line and operating on Windows 95/98.

## Installing the Client software

After you download and save the Client50.exe in a temporary directory, go to this directory and double click on Client50.exe. The software will create all the necessary files for installation. Locate the setup.exe and double click on it. Follow the instruction and your software will be installed.

## Access To Server From Client

Run DigiGuard Client by double click on the icon or from the Start button, choose Programs, NuVision Canada then DigiGuard Client 5. Once you have activated the program you will see a tool bar which has a telephone icon on the left hand side.



## Connections

Click on this Connect button and you will see a telephone data base directory, since there is one entry which is already highlighted you should click on the Call button.

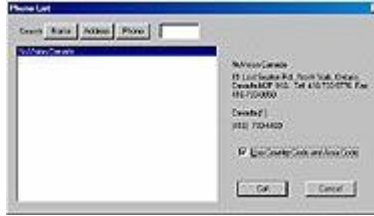
Please note that this directory can store up to 500 telephone numbers. This means you can have up to 500 Servers to call to with this Client software.

o- If you are calling from outside Canada please check the country code for example (1-416-733 4469).

o- If you are calling from Canada please un-check the country code and add 416 in front of the phone number eg. ( 416-733 4469 ).

o- If you are calling from Toronto please un-check the country code eg. ( 733 4469 ).

- o- If you are calling from your office with a PBX telephone system please add the out side code, usually it is like this example ( 9, 733 4469 ).



You can also, use the Connection tab of the Control Properties window to dial. The default example is set to (Canada) 1-416-733-4469.

## Two level password

Once you get connected to the server, you will be asked for a password. Enter the password "digi" or "rima" for full access, all should be in lower case.



## Viewing the Videos

After the connection is established, you can press button numbers to see video 1, 2, 3, 4 or quad. The speed of video transmission through telephone line is not that great, don't be surprised. Although, we are using the most efficient and advanced compression technology available today (Wavelet Compression).

But, in the server side it is very fast, we can go up to 15 frame per second to view or up to 8 f/s to record.

## Capturing Video Using Client Software

All video signals that received through the telephone line can be record on the Client (local) computer. In this mode you have to keep the video windows open. Also, videos can be recorded onto the Server computer. By default, the recording is set to be on the Server. Separate Menus are provided to set the recording mode of the Server and the Client.

## Instructing Server To Record onto Server Computer

1. Go to the Record menu and select Record Control.
2. Choose the Record-Server tab.
3. You can select any video input that you would like to record, check the square box of each camera input. You can also change the recording time interval (of each video source) between frames. Recording will begin when the OK button is pressed.



## Instructing Server To Send Images Over To Client Computer For Recording

1. Go to the Record menu and select Record Control.
2. Choose the Record-Client tab.
3. You can select any video input that you would like to record by checking the square box of each video input. Click OK when you are done.

To start the recording, you have to open the window of that image. For example, if you want to recording images from Camera 2, you have to open that image window to display the image. This send a request of image data to the Server. Recording begins as soon as the image data of that window comes in for display.



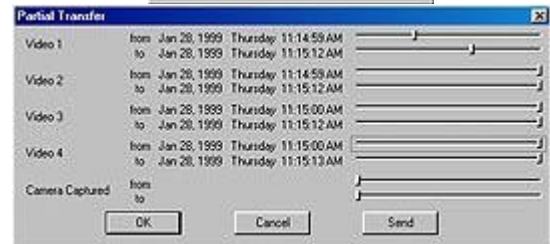
## HOW TO VIEW CAPTURED VIDEO IMAGES

Click on Playback button. You will see the Choose VCR File menu, it will let you select one of the files in the default drive of the Server. Click on the Open button will bring you into the image directory of the server. You can select the file that you would like to playback directly from the Server.

Also, you can transfer that file to the Client computer by clicking on the Transfer button. You can see the number of frames that are ready to transfer.



If you want to transfer only a part of a file choose Partial transfer and select the beginning and the end of the file to transfer the click OK. The file automatically will be transferred onto the image directory of your Client computer and becomes a local file.



## Video Playback Controls

You can view any image on your local Client computer by clicking on the Local View button of the Choose VCR File dialog box. A window called Open will allow you to select the desired file for viewing.

When an appropriate file is selected, a Video Playback window is opened with standard buttons.



On the Video Playback window, click on the Frame Selector Slider Control button to open up the Slider Control window. This gives you a more refine control over the advancement during playback.

On client area of Video Display window, click on the right-hand-mouse button to get the pop-up menu. Then select the Variable Frame Advance option to set the desired number of frames advanced per unit movement of the Slider.

The number of frames advanced during playback is set at 4 frames by default. You can enter the desired number of frames here and press OK.



The speed of playing back recorded video images can also be changed. On the same pop-up menu, select Speed and you will see a Speed Control window where you can enter the desired playback rate.



## DIGITAL RECORDING

There are Seven types of recording or capturing which can be achieved with DigiGuard:

- Snapshot or per frame capturing
- Continuous Recording
- Continuous Alarm Recording
- Continuous Motion Detection
- Auto Motion Detection
- Auto Recording
- Auto Alarm Recording

### Snapshots or Per Frame Capturing

If you just want a snapshot (still picture) of the video image frame. Point the cursor into that frame and click on it with your left mouse button. If you have selected "Sound On" option and your computer has sound support, you should hear a "click" or some other sound clip when the video snapshot is taken. A still frame file will be created under the "Image" sub- directory, and the resolution saved is the same as it shown on the screen. The captured file is always in 16-million colour resolution even if you are using a 256 colour display.

To export the image to other programs , you can save the snapshot recording in the industry standard TARGA (.TGA) format or the Microsoft Bitmap (.BMP) format. Select these formats, TGA ON or BMP ON, from Control Properties menu.



### Continuous Recording

Please look at the previous section "Capturing Video Using Client Software."

### Auto Recording, Auto Alarm Recording, Auto Motion Detection

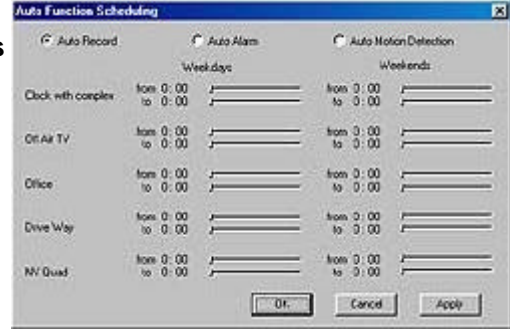
The three Auto features make pre-determined time recording possible. Click on the Control Properties button and select the Alarm Setting tab. In the Auto Setting section, you can select AutoRecord, AutoAlarm or AutoMD by a check mark. If you want to capture all or any of the 4 video signals automatically within a pre-determined time period, choose AutoRecord.



If you want to turn the alarm monitoring system on for all or any of the 4 video signals automatically within a pre-determined time period, choose AutoAlarm. Recording will begin automatically when an alarm goes off. If you want to turn on the Motion Detection for a pre-determined time period, choose AutoMD. Motion monitoring will be on throughout that time period and recording will begin if the

motion is detected within the designated area set for motion detection.

The programming of schedules are not available from the Client software. The illustration shows how weekly schedules can be programmed on the Server.



### Continuous Alarm Recording

You can turn the whole system into alarm alert state by putting a check mark in front of Alarm On under the Alarm Setting of the Alarm Setting tab. Recording will begin when an alarm is triggered. You can also select the Alarm Call On so that the Server can call the Client when the alarm is triggered.

### Continuous Motion Detection

In the Motion Detection section, you can select any available video for motion detection. Select Alarm On from the Alarm Setting to activate the motion detection.

## ALARM SETTING AND RECORDING PERFORMANCE

### Alarm Time Limit

This feature allows user to set the time period for recording after an alarm is triggered. From the client side you can only choose to have this feature on or off.

### Alarm Pre-Record

This feature is very useful if you want to record a desired number of frames before an alarm is triggered. You can see what has caused the alarm. The recording can only take place on the server machine while the viewing is possible on both the client and server computer.

### Image Recording Controls

You can adjust the Compression ratio, Edge enhancement and Decompression for desired image quality.

These adjustment are possible from the Control tab of the Control Properties window.

You can always go back to the default settings by clicking on the Cmp/Decmp Default button. Image resolution can be 256 colors or 24-bit colors. Also, image can be recorded as black and white with 256 gray scale. You can choose Fixed Ratio or Flexible Ratio for image dimensions. Open the image window and size it before recording to your desired size.

## ALARM LOG

Alarm Log shows you a list of all the recordings triggered by alarms.

You can look at the Alarm Log in two ways on the server computer:

1. Go to the Help menu and select Alarm Log.
2. When you are playing back a video. Click the right-mouse button on the Client Area of the Video Playback window. In the pop-up menu choose Open Alarm Log.

To playback any transaction, select it from the list and click on the big Replay button.

